

8511 FALLBROOK

[« Back to Availabilities Summary](#)

4TH FLOOR



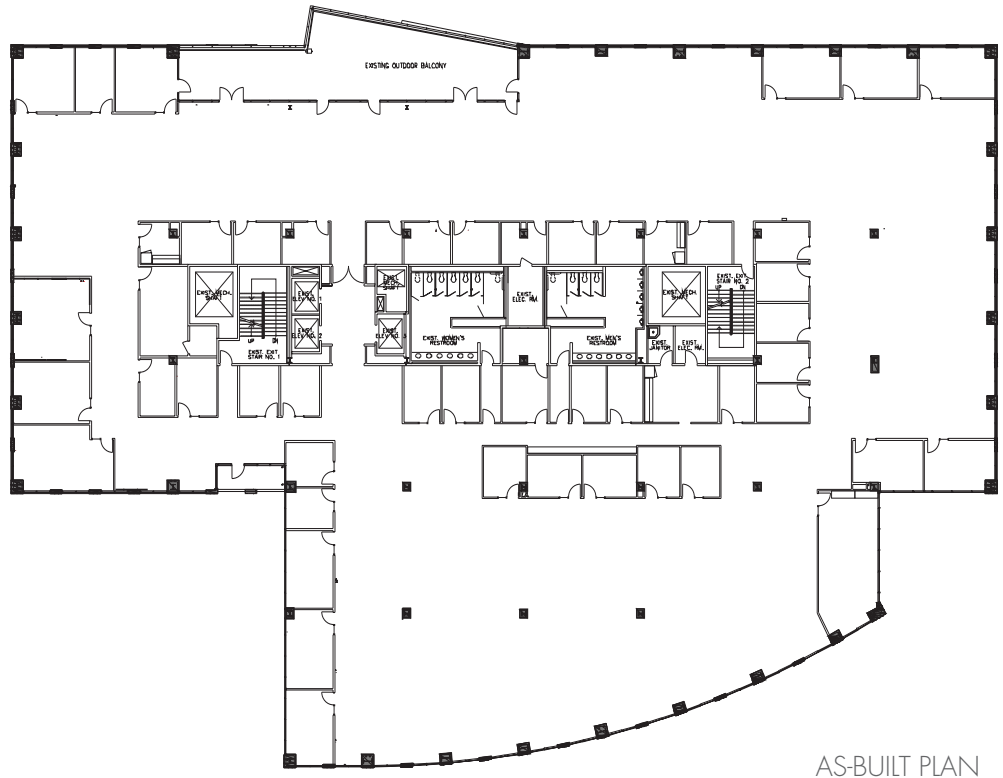
SIZE:
34,706 RSF

TOTAL BUILDING SF:
136,456 RSF

ASKING RATE:
\$2.15 PSF

FIBER CONNECTIVITY PROVIDERS:
AT&T and Verizon FIOS

PARKING RATIO:
6/1000



Building contiguous to 141,386